

Ordering Code

SEN-003-09P00

① ② ③ ④ ⑤

①	SEN Series
②	Number of contacts
③	Design number
④	Type P : 3D printed M : Machined - : Formed
⑤	Additional Specification

Specifications

3D printer

- Application : Prototype
(Available from 1 piece)
- Operating Temperature : room temperature
- Materials : Acrylic
- Contact : Probe pin・Stamping contacts

Machined

- Application : Prototype
(Available from 1 piece)
- Operating Temperature : -45°C to +150°C
- Materials : PES
- Contact : Probe pin・Stamping Contacts

Molded

- Application : Mass production
(Tooling required)
- Operating Temperature : -45°C~+150°C
- Materials : PES
- Contact : Probe pin・Stamping Contacts

Features

Sockets for GAS sensors born from the know-how accumulated through the development of sockets for sensors. The widest selection of products in the industry.

From prototyping to mass production, we offer molded, machined, and 3D printed products to meet your application needs.

Series Lineup

socket number	socket type	pin count	PKG size	PKG thickness	Specifications
SEN-003-08P00	Open top	3(5)	φ9.6×15	-	3D printer
SEN-003-09P00	Open top	3(5)	φ7.6×8.4	-	3D printer
SEN-003-10P00	Open top	3(7)	φ9.6×15	-	3D printer
SEN-003-11P00	Open top	3(14)	φ9.6×15	-	3D printer
SEN-003-12P00	-	3	φ9.6×15	-	3D printer
SEN-003-13P00	-	3	φ9.6×15	-	3D printer
SEN-003-14P00	-	3	φ9.6×15	-	3D printer
SEN-003-15-00	Open top	3(14)	φ9.6×15	-	Molded
SEN-003-16P00	Open top	3(10)	φ9.6×15	-	3D printer
SEN-003-18M00	Open top	3(10)	φ9.6×15	-	Machined
SEN-010-14P00	Clam-Shell	10	3.3×2.8	0.9	3D printer
SEN-080-02M00	Clam-Shell	80	3.3×2.8	0.9	Machined

[Contact Us]

MiS Technologies Corporation

Sagamihara Sangyo Sozo Center #306
5-4-30 Nishihashimoto Midori-ku Sagamihara
Kanagawa 252-0131 Japan

TEL : 81-42-770-9425/FAX : 81-42-770-9426
<https://www.mis-tech.jp/enquiry>



Ordering Code

SEN-003-09M00

① ② ③ ④ ⑤

①	CXP Series / SEN Series
②	Number of contacts
③	Design number
④	Type P : 3D printed M : Machined – : Formed
⑤	Additional Specification

Specifications

3D printer

- Application : Prototype
(Available from 1 piece)
- Operating Temperature : room temperature
- Materials : Acrylic
- Contact : Probe pin・Stamping contacts

Machined

- Application : Prototype
(Available from 1 piece)
- Operating Temperature : -45°C to +150°C
- Materials : PES
- Contact : Probe pin・Stamping Contacts

Molded

- Application : Mass production
(Tooling required)
- Operating Temperature : -45°C~+150°C
- Materials : PES
- Contact : Probe pin・Stamping Contacts

Features

Sockets for Acceleration sensors born from the know-how accumulated through the development of sockets for sensors. The widest selection of products in the industry. From prototyping to mass production, we offer molded, machined, and 3D printed products to meet your application needs.

Series Lineup

socket number	socket type	pin count	PKG size	PKG thickness	Specifications
CXP-X08-08-00	Clam-Shell	8	8.89×7.24	3.42	Molded
SEN-012-06M00	Clam-Shell	12	5×5	1.6	Machined
SEN-014-05M00	Clam-Shell	14	3×3	1.134	Machined
SEN-014-12M00	Clam-Shell	14	4×4	1.33	Machined
SEN-014-13M00	Clam-Shell	14	4×4	1.33	Machined
SEN-014-14M00	Clam-Shell	14	4×4	1.33	Machined
SEN-014-15M00	Clam-Shell	14	5×5	1.53	Machined
SEN-014-17-00	Clam-Shell	14	5×5	1.53	Molded
SEN-028-03M00	Clam-Shell	28	6.5×6.5	2.55	Machined
SEN-010-01M00	Clam-Shell	10	2.5×2.5	0.97	Machined
SEN-014-01M00	Clam-Shell	14	3.77×3.77	1	Machined
SEN-014-02M00	Clam-Shell	14	3.77×3.77	1.6	Machined
SEN-014-03M00	Clam-Shell	14	3×3	1.04	Machined

[Contact Us]

MiS Technologies Corporation

Sagamihara Sangyo Sozo Center #306
5-4-30 Nishihashimoto Midori-ku Sagamihara
Kanagawa 252-0131 Japan

TEL : 81-42-770-9425/FAX : 81-42-770-9426
<https://www.mis-tech.jp/enquiry>



Ordering Code

SEN-008-21-00

① ② ③ ④ ⑤

①	SEN Series
②	Number of contacts
③	Design number
④	Type P : 3D printed M : Machined – : Formed
⑤	Additional Specification

Specifications

3D printer

- Application : Prototype
(Available from 1 piece)
- Operating Temperature : room temperature
- Materials : Acrylic
- Contact : Probe pin・Stamping contacts

Machined

- Application : Prototype
(Available from 1 piece)
- Operating Temperature : -45°C to +150°C
- Materials : PES
- Contact : Probe pin・Stamping Contacts

Molded

- Application : Mass production
(Tooling required)
- Operating Temperature : -45°C~+150°C
- Materials : PES
- Contact : Probe pin・Stamping Contacts

Features

Sockets for Atmospheric pressure sensors born from the know-how accumulated through the development of sockets for sensors. The widest selection of products in the industry.

From prototyping to mass production, we offer molded, machined, and 3D printed products to meet your application needs.

Series Lineup

socket number	socket type	pin count	PKG size	PKG thickness	Specifications
SEN-008-10-00	Clam-Shell	8	3.9×3.9	2.3	Molded
SEN-008-16-00	Clam-Shell	8	2.9×2.9	1.5	Molded
SEN-010-03-00	Clam-Shell	10	2×2	0.725/0.73	Molded

[Contact Us]

MiS Technologies Corporation

Sagamihara Sangyo Sozo Center #306
5-4-30 Nishihashimoto Midori-ku Sagamihara
Kanagawa 252-0131 Japan

TEL : 81-42-770-9425/FAX : 81-42-770-9426
<https://www.mis-tech.jp/enquiry>



Ordering Code

SEN-008-21-00

① ② ③ ④ ⑤

①	SEN Series
②	Number of contacts
③	Design number
④	Type P : 3D printed M : Machined - : Formed
⑤	Additional Specification

Specifications

3D printer

- Application : Prototype
(Available from 1 piece)
- Operating Temperature : room temperature
- Materials : Acrylic
- Contact : Probe pin・Stamping contacts

Machined

- Application : Prototype
(Available from 1 piece)
- Operating Temperature : -45°C to +150°C
- Materials : PES
- Contact : Probe pin・Stamping Contacts

Molded

- Application : Mass production
(Tooling required)
- Operating Temperature : -45°C~+150°C
- Materials : PES
- Contact : Probe pin・Stamping Contacts

Features

Sockets for Force torque sensors born from the know-how accumulated through the development of sockets for sensors. The widest selection of products in the industry. From prototyping to mass production, we offer molded, machined, and 3D printed products to meet your application needs.

Series Lineup

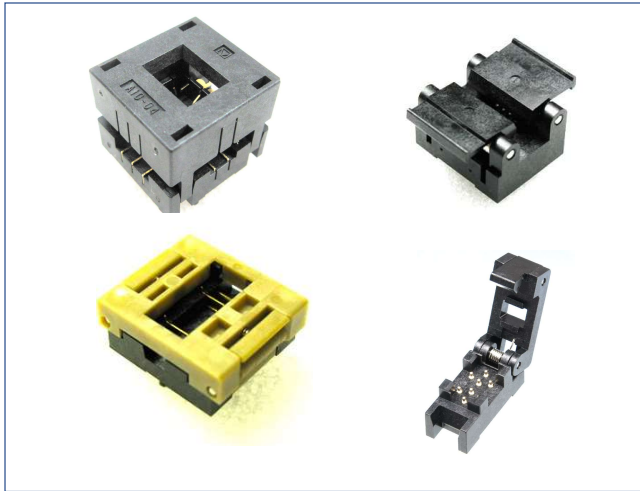
socket number	socket type	pin count	PKG size	PKG thickness	Specifications
SEN-020-04M00	Clam-Shell	20	-	-	Machined
SEN-020-06-00	Clam-Shell	20	-	-	Molded

[Contact Us]

MiS Technologies Corporation

Sagamihara Sangyo Sozo Center #306
5-4-30 Nishihashimoto Midori-ku Sagamihara
Kanagawa 252-0131 Japan

TEL : 81-42-770-9425/FAX : 81-42-770-9426
<https://www.mis-tech.jp/enquiry>



Ordering Code

SEN-010-XX-00

① ③ ④ ⑤ ⑥

CXC-A10-04-00

① ② ③ ④ ⑤ ⑥

①	CXC Series/CXP Series/SEN Series
②	PKG Size A~U : 7050~4642Size
③	Number of contacts
④	Design number
⑤	Type - : Formed M : Machined
⑥	Additional Specification

Specifications

Machined

- Application : Prototype
(Available from 1 piece)
- Operating Temperature : -45°C to +150°C
- Materials : PES
- Contact : Probe pin・Stamping contacts

Molded

- Application : Mass production
(Tooling required)
- Operating Temperature : -45°C~+150°C
- Materials : PES
- Contact : Probe pin・Stamping contacts

Features

Evaluation sockets for GYRO-sensors for automotive, video RVC and AGV applications. High-precision, compact gyro-sensors have a significant impact on angular rate accuracy due to differences in the material and structure of the element, so we have achieved an attitude angle of $\pm 0.1^\circ$ when the socket is inserted. Molding and cutting are available to suit applications from prototyping to mass production, and production is possible from a quantity of one.

Series Lineup

socket number	socket type	pin count	PKG size	PKG thickness	Specifications
CXC-A10-04-00	Open top	10	7x5	1.55	Molded
CXC-A14-01-00	Open top	14	6.5x5.2	1.9/1.95	Molded
CXC-A14-02-00	Open top	14	6.5x5.2	1.9/1.95	Molded
CXC-A14-03-00	Open top	14	6.5x5.2	1.9	Molded
CXC-B08-04-00	Clam-Shell	8	6x4.722	3.3	Molded
CXC-B08-05-00	Butterfly	8	6x4.821 6x4.757 6x4.722	3.3	Molded
CXC-B08-05-02	Butterfly	8	6x4.821 6x4.757 6x4.722	3.3	Molded
CXC-B08-05M01	Butterfly	8	6x4.821 6x4.757 6x4.722	3.3	Machined
CXC-B08-05M03	Butterfly	8	6x4.821 6x4.757 6x4.722	3.3	Machined
CXC-B08-05M04	Butterfly	8	6x4.821 6x4.757 6x4.722	3.3	Machined
CXC-C04-09M00	Clam-Shell	4	5x4	1.3	Machined
CXC-C08-23M00	Clam-Shell	8	5x3.2	1.3	Machined

[Contact Us]

MiS Technologies Corporation

Sagamihara Sangyo Sozo Center #306
5-4-30 Nishihashimoto Midori-ku Sagamihara
Kanagawa 252-0131 Japan

TEL : 81-42-770-9425/FAX : 81-42-770-9426
<https://www.mis-tech.jp/enquiry>

Series Lineup

socket number	socket type	pin count	PKG size	PKG thickness	Specifications
CXC-C08-24-00	Open top	8(12)	5×3.2	1.3	Molded
CXC-C08-25-00	Clam-Shell	8	4.05×3.05	0.71	Molded
CXC-C08-25M01	Clam-Shell	8	4.05×3.05	0.73	Machined
CXC-C08-25M02	Clam-Shell	8	4.05×3.05	0.88	Machined
CXC-C08-25M03	Clam-Shell	8	4.05×3.05	0.58	Machined
CXC-C10-09-00	Open top	10(14)	5×3.2	1.3	Molded
CXC-U20-02M00	Clam-Shell	20	5×5	2.3	Machined
CXC-X04-01-00	-	4	11.4×7.6	-	Molded
CXC-X04-01M00	-	4	11.4×7.6	-	Machined

socket number	socket type	pin count	PKG size	PKG thickness	Specifications
CXP-A08-05-00	Clam-Shell	8	7×5	2.7	Molded
CXP-A08-06-00	Clam-Shell	8	7×5	2.2	Molded
CXP-C06-10M00	Clam-Shell	6	5×4	1.28	Machined
CXP-C07-01M00	Clam-Shell	7	5×4	1.3	Machined
CXP-G06-05M00	Clam-Shell	6	3.25×2.55	1.28	Machined
CXP-I06-04M00	Clam-Shell	6	2.55×2.05	0.41	Machined
CXP-K06-06-00	Clam-Shell	6	2.14×1.74	0.75	Molded
CXP-S04-01-00	Clam-Shell	4	7.9×3.9	1.9	Molded
CXP-S08-01-00	Clam-Shell	8	7.9×3.9	1.9	Molded
CXP-T08-02M00	Clam-Shell	8	3×3	1	Machined
CXP-X06-10M00	Clam-Shell	6	8.89×7.24	2.98	Machined
CXP-X40-01M00	Clam-Shell	40	10.5×10.5	5.1	Machined

socket number	socket type	pin count	PKG size	PKG thickness	Specifications
SEN-008-01M00	Butterfly	8	4.05×3.05	0.71	Machined
SEN-008-02M00	Butterfly	8	4.05×3.05	0.77	Machined
SEN-008-03-00	Butterfly	8	4.05×3.05	0.77	Molded
SEN-008-27M00	-	8(16)	12.5×12.5	4.08	Machined
SEN-010-04-00	Open top	10	9×8.7	4.35	Molded
SEN-010-13M00	-	10(20)	23.7×23.7	9.9	Machined
SEN-012-01-01	Clam-Shell	12	5.5×6.3	2.55	Molded
SEN-012-01M00	Clam-Shell	12	5.5×6.3	2.55	Machined
SEN-012-02M00	Clam-Shell	12	14×11.5	6.5	Machined
SEN-012-03-00	Clam-Shell	12(14)	6×10.4	2.18	Molded
SEN-012-04-00	Clam-Shell	12	6.7×10.4	2.78	Molded
SEN-012-05-01	Clam-Shell	12	6.7×10.4	2.78	Molded
SEN-012-05M00	Clam-Shell	12	6.7×10.4	2.78	Machined
SEN-012-07-00	Clam-Shell	12(14)	6×10.4	2.18	Molded
SEN-012-09-00	Clam-Shell	12(14)	6×10.4	2.18	Molded
SEN-012-15-00	Clam-Shell	12(14)	10.4×6	2.18	Molded
SEN-012-16-00	Clam-Shell	12(26)	10.4×6.7	2.78	Molded
SEN-012-17-00	Clam-Shell	12(26)	10.4×6.7	2.78	Molded
SEN-012-20-00	Clam-Shell	12(26)	10.4×6.7	2.78	Molded
SEN-014-06M00	Butterfly	14	6.2×5	1.85	Machined
SEN-014-09M00	Clam-Shell	14	4×4	1.33	Machined
SEN-014-10M00	Butterfly	14	6.2×5	1.75	Machined
SEN-014-25M00	Clam-Shell	14	5×5	1.63	Machined
SEN-014-26M00	Clam-Shell	14	5.15×5.15	1.83	Machined
SEN-014-27M00	Clam-Shell	14	5.15×5.15	2.13	Machined
SEN-014-30M00	Open top	14	5.15×5.15	1.83	Machined
SEN-014-31M00	Open top	14	5.15×5.15	1.83	Machined
SEN-014-32M00	Clam-Shell	14	5.15×5.15	1.81	Machined
SEN-014-33M00	-	14	5×5	1.53	Machined
SEN-018-01-00	Open top	18(22)	5.95×5.4	2.6	Molded
SEN-018-09M00	-	18	18×18	8.3	Machined
SEN-020-01M00	Clam-Shell	20	4.4×3.65	0.96	Machined
SEN-028-01M00	Clam-Shell	28	5.6×4.6	1.05	Machined



Ordering Code

SEN-003-09M00

① ② ③ ④ ⑤

①	CXP Series / SEN Series
②	Number of contacts
③	Design number
④	Type P : 3D printed M : Machined - : Formed
⑤	Additional Specification

Specifications

3D printer

- Application : Prototype
(Available from 1 piece)
- Operating Temperature : room temperature
- Materials : Acrylic
- Contact : Probe pin・Stamping contacts

Machined

- Application : Prototype
(Available from 1 piece)
- Operating Temperature : -45°C to +150°C
- Materials : PES
- Contact : Probe pin・Stamping Contacts

Molded

- Application : Mass production
(Tooling required)
- Operating Temperature : -45°C~+150°C
- Materials : PES
- Contact : Probe pin・Stamping Contacts

Features

Sockets for Light sensors born from the know-how accumulated through the development of sockets for sensors. The widest selection of products in the industry.

From prototyping to mass production, we offer molded, machined, and 3D printed products to meet your application needs.

Series Lineup

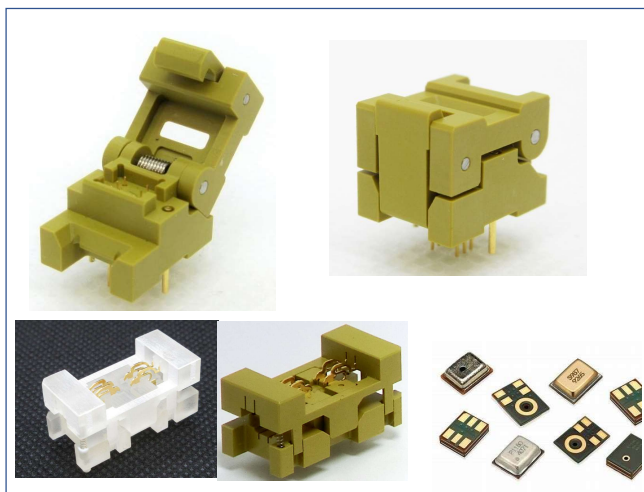
socket number	socket type	pin count	PKG size	PKG thickness	Specifications
CXP-K06-12-00	Clam-Shell	6	2.09×1.69	1.01	Molded
LD-005-01M00	Clam-Shell	5	4.5×4.1	1.45	Machined
SEN-006-01M00	-	6	-	-	Machined
SEN-006-10-00	Clam-Shell	6	2.55×1.25	0.8	Molded
SEN-014-24M00	Clam-Shell	14	14.22×14.22	2.5	Machined
SEN-014-28M00	-	14(28)	6.5×6	0.401	Machined
SEN-014-29M00	Clam-Shell	14	14.22×14.22	2.5	Machined
SEN-018-07M00	Clam-Shell	18	14.22×14.22	2.5	Machined
SEN-018-08M00	Clam-Shell	18	11×11	2.05	Machined
SEN-020-05M00	-	20	9.5×7.5	2.1	Machined
SEN-102-01M00	Clam-Shell	102	11.2×10	0.9	Machined

[Contact Us]

MiS Technologies Corporation

Sagamihara Sangyo Sozo Center #306
5-4-30 Nishihashimoto Midori-ku Sagamihara
Kanagawa 252-0131 Japan

TEL : 81-42-770-9425/FAX : 81-42-770-9426
<https://www.mis-tech.jp/enquiry>



Ordering Code

SEN-004-01M00

① ② ③ ④ ⑤

①	SEN Series
②	Number of contacts
③	Design number
④	Type P : 3D printed M : Machined - : Formed
⑤	Additional Specification

Specifications

3D printer

- Application : Prototype (Available from 1 piece)
- Operating Temperature : room temperature
- Materials : Acrylic
- Contact : Probe pin・Stamping contacts

Machined

- Application : Prototype (Available from 1 piece)
- Operating Temperature : -45°C to +150°C
- Materials : PES
- Contact : Probe pin・Stamping Contacts

Molded

- Application : Mass production (Tooling required)
- Operating Temperature : -45°C~+150°C
- Materials : PES
- Contact : Probe pin・Stamping Contacts

Features

Sockets for MEMS microphones based on the know-how accumulated through the development of sockets for sensors. The largest selection of products in the industry.

Formed, machined and 3D printed products are available, and we can manufacture from one piece.

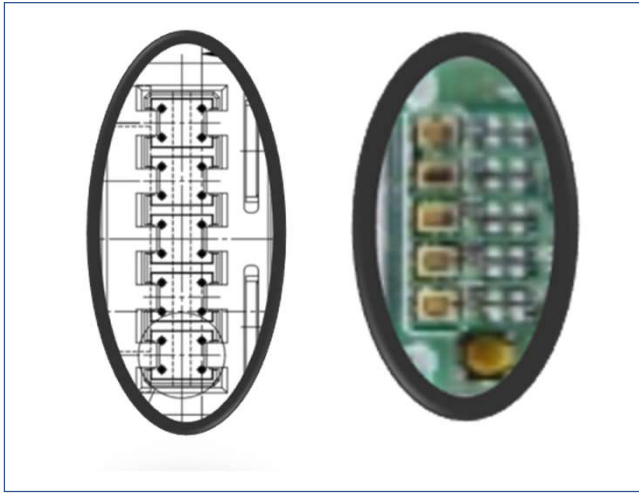
Series Lineup

socket number	socket type	pin count	PKG size	PKG thickness	Specifications
SEN-003-01P00	Open top	3	1.85×2.75	0.9	3D printer
SEN-003-06P00	Clam-Shell	3	2.75×1.85	0.9	3D printer
SEN-003-07P00	Open top	3	2.5×3.35	0.98	3D printer
SEN-003-17P00	Open top	3	3.35×2.5	1	3D printer
SEN-004-02M00	Clam-Shell	4	3.76×2.95	1.1	Machined
SEN-004-03M00	-	4	3.76×3	1.1	Machined
SEN-004-04-00	Clam-Shell	4	3.76×2.95	1.1	Molded
SEN-004-05P00	Open top	4	3.76×3	1.1	3D printer
SEN-004-06P00	Open top	4	2.5×3.35	0.98	3D printer
SEN-004-07M00	Clam-Shell	4	3.76×2.95	1.1	Machined
SEN-004-08P00	Open top	4	3.76×2.95	1.1	3D printer
SEN-004-10P00	Clam-Shell	4	3.76×3	1.1	3D printer
SEN-004-11P00	Clam-Shell	4	3.76×2.24	1.1	3D printer
SEN-004-12P00	Clam-Shell	4	2.75×1.85	0.95	3D printer
SEN-004-13P00	Open top	4	2.75×1.85	0.9	3D printer
SEN-004-14P00	Open top	4	3.76×2.95	1.1	3D printer
SEN-004-15P00	Clam-Shell	4	2.83×1.93	0.9	3D printer
SEN-004-17P00	Clam-Shell	4	10×9.4	4.3	3D printer
SEN-004-19P00	Open top	4	2.75×1.85	0.9	3D printer
SEN-005-01M00	Clam-Shell	5	3.5×2.65	0.98	Machined
SEN-005-02P00	Open top	5	2.65×3.5	0.98	3D printer
SEN-005-03P00	Open top	5	2.65×3.5	0.98	3D printer
SEN-005-04P00	Clam-Shell	5	3.5×2.65	0.98	3D printer
SEN-005-06P00	Open top	5	4×3	1	3D printer
SEN-005-09M00	Open top	5	3.6×2.5	1.1	Machined
SEN-005-10M00	Open top	5	2.9×1.9	0.9	Machined
SEN-005-15M00	Open top	5	3.6×2.5	1.1	Machined
SEN-005-16M00	Open top	5	3.5×2.65	1.1	Machined
SEN-005-17P00	Open top	5	3.5×2.65	1.1	3D printer
SEN-005-18P00	Open top	5	4.72×3.76	3.5	3D printer
SEN-006-02M00	Clam-Shell	6	3.5×2.65	1.035	Machined
SEN-006-03P00	Open top	6	2.65×3.5	1.03	3D printer
SEN-006-05P00	Clam-Shell	6	4.72×3.76	3.5	3D printer
SEN-006-06P00	Open top	6	4.72×3.76	3.5	3D printer
SEN-006-11P00	Clam-Shell	6	3.5×2.65	0.98	3D printer
SEN-006-12P00	Clam-Shell	6	3.5×2.65	0.98	3D printer
SEN-009-01P00	Open top	9	4×3	1	3D printer

[Contact Us]

MiS Technologies Corporation

Sagamihara Sangyo Sozo Center #306
5-4-30 Nishihashimoto Midori-ku Sagamihara
Kanagawa 252-0131 Japan
TEL : 81-42-770-9425/FAX : 81-42-770-9426
<https://www.mis-tech.jp/enquiry>



Ordering Code

SEN-008-02P00

① ② ③ ④ ⑤

①	SEN Series
②	Number of contacts
③	Design number
④	Type P : 3D printed M : Machined – : Formed
⑤	Additional Specification

Specifications

3D printer

- Application : Prototype
(Available from 1 piece)
- Operating Temperature : room temperature
- Materials : Acrylic
- Contact : Probe pin・Stamping contacts

Machined

- Application : Prototype
(Available from 1 piece)
- Operating Temperature : -45°C to +150°C
- Materials : PES
- Contact : Probe pin・Stamping Contacts

Molded

- Application : Mass production
(Tooling required)
- Operating Temperature : -45°C~+150°C
- Materials : PES
- Contact : Probe pin・Stamping Contacts

Features

Sockets for Odor sensors born from the know-how accumulated through the development of sockets for sensors. The widest selection of products in the industry. From prototyping to mass production, we offer molded, machined, and 3D printed products to meet your application needs.

Series Lineup

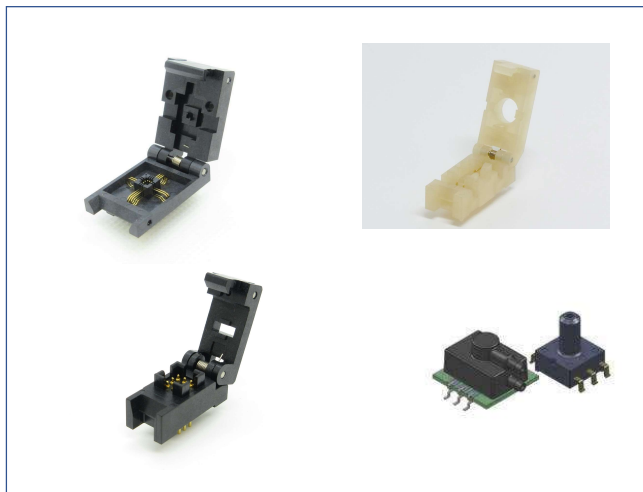
socket number	socket type	pin count	PKG size	PKG thickness	Specifications
SEN-020-02P00	-	20	3.2×2.5	0.45	3D printer
SEN-020-03P00	-	20	3.2×2.5	0.45	3D printer

[Contact Us]

MiS Technologies Corporation

Sagamihara Sangyo Sozo Center #306
5-4-30 Nishihashimoto Midori-ku Sagamihara
Kanagawa 252-0131 Japan

TEL : 81-42-770-9425/FAX : 81-42-770-9426
<https://www.mis-tech.jp/enquiry>



Ordering Code

SEN-008-21-00

① ② ③ ④ ⑤

①	SEN Series/QFN Series/SOP Series
②	Number of contacts
③	Design number
④	Type P : 3D printed M : Machined – : Formed
⑤	Additional Specification

Specifications

3D printer

- Application : Prototype
(Available from 1 piece)
- Operating Temperature : room temperature
- Materials : Acrylic
- Contact : Probe pin・Stamping contacts

Machined

- Application : Prototype
(Available from 1 piece)
- Operating Temperature : -45°C to +150°C
- Materials : PES
- Contact : Probe pin・Stamping Contacts

Molded

- Application : Mass production
(Tooling required)
- Operating Temperature : -45°C~+150°C
- Materials : PES
- Contact : Probe pin・Stamping Contacts

Features

Sockets for pressure sensors born from the know-how accumulated through the development of sockets for sensors. The widest selection of products in the industry. From prototyping to mass production, we offer molded, machined, and 3D printed products to meet your application needs.

Series Lineup

socket number	socket type	pin count	PKG size	PKG thickness	Specifications
CXP-E08-02-00	Clam-Shell	8	3.8×3.8	1.25	Molded
QFN-016-01-00	Clam-Shell	16	3×3	0.75	Molded
SEN-004-20-00	Clam-Shell	4	2×2	0.88/0.75	Molded
SEN-006-04M00	Clam-Shell	6	2×2	0.8	Machined
SEN-006-07M00	Clam-Shell	6	7×7	9.7	Machined
SEN-006-08M00	Clam-Shell	6	2×2	0.8	Machined
SEN-006-13-00	Clam-Shell	6	2×2	0.8	Molded
SEN-008-05M00	Clam-Shell	8	5×4.4	1.55	Machined
SEN-008-05M01	Clam-Shell	8	5×4.4	1.55	Machined
SEN-008-06M00	Clam-Shell	8	5×5	1.6	Machined
SEN-008-07M00	Clam-Shell	8	3×3	0.9/1.0	Machined
SEN-008-09-00	Clam-Shell	8	3×3	0.9/1.0	Molded
SEN-008-13M00	Clam-Shell	8	2×1.9	0.9	Machined
SEN-008-14-00	Clam-Shell	8	3×3	1.0/1.1	Molded
SEN-008-17M00	Clam-Shell	8	3.4×3.4	1.85	Machined
SEN-008-18M00	Clam-Shell	8	2×2	0.71	Machined
SEN-008-19M00	Clam-Shell	8	6×5	7.2	Machined
SEN-008-20P00	Clam-Shell	8	6×5	7.2	3D printer
SEN-008-21-00	Clam-Shell	8	2.5×2	0.92	Molded
SEN-008-22M00	Clam-Shell	8	7×6.5		Machined

[Contact Us]

MiS Technologies Corporation

Sagamihara Sangyo Sozo Center #306
5-4-30 Nishihashimoto Midori-ku Sagamihara
Kanagawa 252-0131 Japan

TEL : 81-42-770-9425/FAX : 81-42-770-9426
<https://www.mis-tech.jp/enquiry>

Series Lineup

socket number	socket type	pin count	PKG size	PKG thickness	Specifications
SEN-008-23-00	Clam-Shell	8	6x5	7.2	Molded
SEN-008-24-00	Clam-Shell	8	4x3	1	Molded
SEN-008-25-00	Clam-Shell	8	3.8x3.8	1.75	Molded
SEN-008-26-00	Clam-Shell	8	5x5	1.65	Molded
SEN-008-28-00	Clam-Shell	8	2.5x2	0.82	Molded
SEN-008-30P00	Clam-Shell	8	4x3	1	3D printer
SEN-008-31-00	Clam-Shell	8	2.5x2	0.92	Molded
SEN-008-32M00	Clam-Shell	8	4.8x3.3	2.75	Machined
SEN-010-05P00	Open top	10	7x7	7.2	3D printer
SEN-010-06P00	Open top	10	7x7	7.2	3D printer
SEN-010-07-00	Clam-Shell	10	2x2	0.72/0.8	Molded
SEN-010-11-00	Clam-Shell	10	3.55x3.55	1.445	Molded
SEN-010-12-00	Clam-Shell	10	2x2	0.72/0.8	Molded
SEN-012-11M00	Clam-Shell	12	5x5	5.88	Machined
SEN-012-14M00	Clam-Shell	12	5.8x3.3	2.75	Machined
SEN-012-19-00	Clam-Shell	12	3.55x3.55	1.445	Molded
SEN-014-04M00	Clam-Shell	14	7x7	7.2	Machined
SEN-014-08-00	Clam-Shell	14	7x7	7.2	Molded
SEN-014-11P00	Open top	10	7x7	7.2	3D printer
SEN-014-16P00	Clam-Shell	14	7x7	7.2	3D printer
SEN-014-21M00	Clam-Shell	14	2.5x2.5	0.8	Machined
SEN-014-22M00	-	14	7x7	7.2	Machined
SEN-014-23M00	-	14	7x7	7.2	Machined

socket number	socket type	pin count	PKG size	PKG thickness	Specifications
SEN-016-01M00	Clam-Shell	16	5.6x5.6	1.425	Machined
SEN-018-02M00	Butterfly	18	-	-	Machined
SEN-018-03-00	-	18	16.7x14	-	Molded
SEN-018-04-00	-	-	-	-	Molded
SEN-018-04-01	-	-	-	-	Molded
SEN-018-05-00	-	-	-	-	Molded
SEN-026-01M00	-	26	-	-	Machined
SEN-028-02M00	Clam-Shell	28	6.5x6.5	1	Machined
SEN-080-01M00	-	80	3x3	0.9/1.0	Machined
SOP-014-03M00	Clam-Shell	14	11.36x7.52	9.15	Machined

[Contact Us]

MiS Technologies Corporation
 Sagamihara Sangyo Sozo Center #306
 5-4-30 Nishihashimoto Midori-ku Sagamihara
 Kanagawa 252-0131 Japan
TEL : 81-42-770-9425/FAX : 81-42-770-9426
<https://www.mis-tech.jp/enquiry>



Ordering Code

SEN-008-21-00

① ② ③ ④ ⑤

①	SEN Series
②	Number of contacts
③	Design number
④	Type P : 3D printed M : Machined – : Formed
⑤	Additional Specification

Specifications

3D printer

- Application : Prototype
(Available from 1 piece)
- Operating Temperature : room temperature
- Materials : Acrylic
- Contact : Probe pin・Stamping contacts

Machined

- Application : Prototype
(Available from 1 piece)
- Operating Temperature : -45°C to +150°C
- Materials : PES
- Contact : Probe pin・Stamping Contacts

Molded

- Application : Mass production
(Tooling required)
- Operating Temperature : -45°C~+150°C
- Materials : PES
- Contact : Probe pin・Stamping Contacts

Features

Sockets for Temperature and Humidity sensors born from the know-how accumulated through the development of sockets for sensors. The widest selection of products in the industry.

From prototyping to mass production, we offer molded, machined, and 3D printed products to meet your application needs.

Series Lineup

socket number	socket type	pin count	PKG size	PKG thickness	Specifications
SEN-008-12M00	Clam-Shell	8	4x4	0.75	Machined
SEN-004-18M00	Clam-Shell	4	2x2	0.88/0.75	Machined
SEN-008-33-00	Clam-Shell	8	2.5x2.5	0.9	Molded

[Contact Us]

MiS Technologies Corporation

Sagamihara Sangyo Sozo Center #306
5-4-30 Nishihashimoto Midori-ku Sagamihara
Kanagawa 252-0131 Japan

TEL : 81-42-770-9425/FAX : 81-42-770-9426
<https://www.mis-tech.jp/enquiry>



Ordering Code

CAP-002-02-00

① ③ ④ ⑤ ⑥

CXC-H02-01-00

① ② ③ ④ ⑤ ⑥

①	CXP Series / CXC Series
②	PKG Size H : 1206Size
③	Number of contacts
④	Design number
⑤	Type – : Formed
⑥	Additional Specification

Specifications

Molded

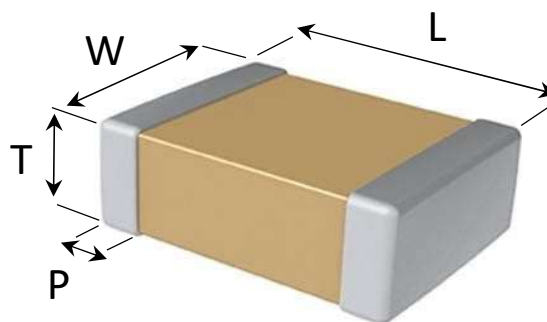
- Application : Mass production (Tooling required)
- Operating Temperature : -45°C~+150°C
- Materials : PES
- Contact : Probe pin·Stamping contacts

Features

The world's first MLCC (multi-layer ceramic capacitor) evaluation socket. MLCCs are indispensable electronic components in all fields of life, from small electronic devices such as smartphones, to EVs and future automated driving, as well as 5G and IoT. The MLCC is a socket that enables stable measurement of small chip components that require high reliability.

Series Lineup

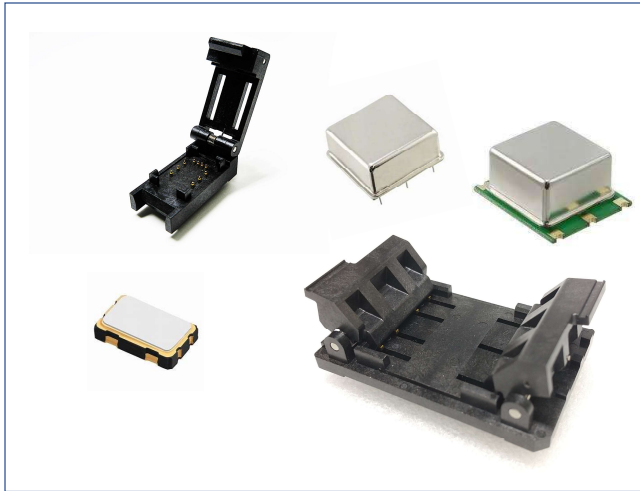
inch	mm	socket number	L(mm)	W(mm)	T(mm)	P(mm)	
						MIN	MAX
0402	1005	CAP-002-04-00	1.00±0.10	0.50±0.10	0.51±0.10	0.1	0.41
0603	1608	CAP-002-01-00	1.60±0.15	0.80±0.15	0.80±0.07	0.2	0.5
0805	2012	CAP-002-02-00	2.00±0.20	1.25±0.20	1.35±0.10	0.25	0.71
0805	2012	CAP-002-03-00	2.00±0.10	1.25±0.10	0.90±0.10	0.4	0.6
1206	3216	CXC-H02-01-00	3.20±0.20	1.60±0.20	1.6±0.20	0.2	0.2
1206	3216	CAP-002-07M00	3.20±0.10	1.60±0.10	0.85±0.10	0.35	0.75
1210	3225	CAP-002-05-00	3.20±0.10	2.50±0.10	1.40±0.10	0.3	0.7



【 Package Dimensions 】

[Contact Us]

MiS Technologies Corporation
Sagamihara Sangyo Sozo Center #306
5-4-30 Nishihashimoto Midori-ku Sagamihara
Kanagawa 252-0131 Japan
TEL : 81-42-770-9425/FAX : 81-42-770-9426
<https://www.mis-tech.jp/enquiry>



Features

Sockets for OCXO measurement and evaluation.

A wide variety of sockets are available for all sizes: 25×25, 25×22, 14×9, 9×7, and 7×5. Both SMD type and lead type can be mounted.

Ordering Code

CXX-X08-01-00

① ② ③ ④ ⑤ ⑥

①	CXX Series/CXC Series/CXP Series
②	PKG Size X : 25×25~7×5
③	Number of contacts
④	Design number
⑤	Type - : Formed M : Machined
⑥	Additional Specification

Specifications

Machined

- Application : Prototype (Available from 1 piece)
- Operating Temperature : -45°C~+150°C
- Materials : PES
- Contact : Stamping Contacts/Probe pin

Molded

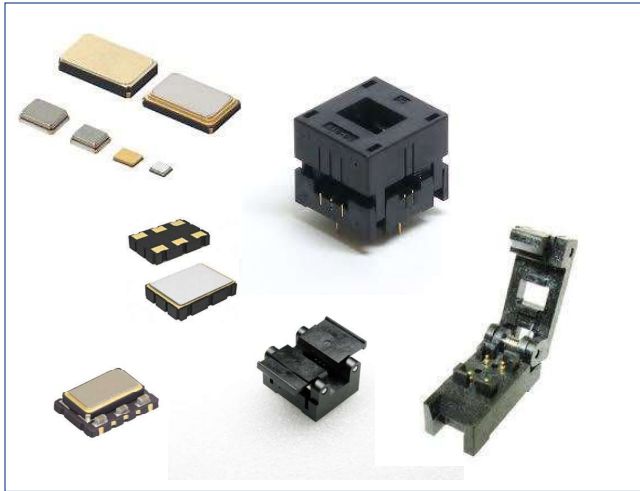
- Application : Mass production (Tooling required)
- Operating Temperature : -45°C~+150°C
- Materials : PES
- Contact : Stamping Contacts/Probe pin

Series Lineup

PKG size	pin count	variety
25×25	7~9pin	7
25×22	7~8pin	16
14×9	6pin	16
9×7	6pin	4
7×5	10pin	2

[Contact Us]

MiS Technologies Corporation
Sagamihara Sangyo Sozo Center #306
5-4-30 Nishihashimoto Midori-ku Sagamihara
Kanagawa 252-0131 Japan
TEL : 81-42-770-9425/FAX : 81-42-770-9426
<https://www.mis-tech.jp/enquiry>



Ordering Code

CXP-A04-01-00

① ② ③ ④ ⑤ ⑥

①	CXP Series/CXC Series
②	PKG Size X : 25×25~7×5
③	Number of contacts
④	Design number
⑤	Type - : Formed M : Machined
⑥	Additional Specification

Specifications

Machined

- Application : Prototype
(Available from 1 piece)
- Operating Temperature : -45°C~+150°C
- Materials : PES
- Contact : Stamping Contacts/Probe pin

Molded

- Application : Mass production
(Tooling required)
- Operating Temperature : -45°C~+150°C
- Materials : PES
- Contact : Stamping Contacts/Probe pin

Features

Sockets for crystal and oscillator measurement and evaluation. The CXP and CXC series of sockets for crystal devices, our main products, are designed for frequency measurement and characterization, and are available in more than 1,300 types to meet almost all packages and terminal arrangements. Manual and automatic insertion/extraction of the cover can be selected according to the application.

Series Lineup

PKG size	pin count	variety
7×5	4~12pin	188
6×3.5	4pin	17
5×3.2	4~10pin	152
3.2×2.5	4~12pin	246
2.5×2	4~10pin	112
2×1.6	4~8pin	85
1.6×1.2	4pin	68
1.2×1	4pin	24
1×0.8	4pin	16
0.8×0.6	4pin	3

[Contact Us]

MiS Technologies Corporation
Sagamihara Sangyo Sozo Center #306
5-4-30 Nishihashimoto Midori-ku Sagamihara
Kanagawa 252-0131 Japan
TEL : 81-42-770-9425/FAX : 81-42-770-9426
<https://www.mis-tech.jp/enquiry>



Ordering Code

RST-002-01-00

① ② ③ ④ ⑤

①	RST Series
②	Number of contacts
③	Design number
④	Type P : 3D printed M : Machined – : Formed
⑤	Additional Specification

Specifications

3D printer

- Application : Prototype
(Available from 1 piece)
- Operating Temperature : room temperature
- Materials : Acrylic
- Contact : Probe pin・Stamping contacts

Machined

- Application : Prototype
(Available from 1 piece)
- Operating Temperature : -45°C to +150°C
- Materials : PES
- Contact : Probe pin・Stamping Contacts

Molded

- Application : Mass production
(Tooling required)
- Operating Temperature : -45°C~+150°C
- Materials : PES
- Contact : Probe pin・Stamping Contacts

Features

Sockets for SMD Resistor born from the know-how accumulated through the development of sockets for sensors. The widest selection of products in the industry. From prototyping to mass production, we offer molded, machined, and 3D printed products to meet your application needs.

Series Lineup

socket number	socket type	pin count	PKG size	PKG thickness	Specifications
RST-002-01-00	Clam-Shell	2	1.6×0.85	0.45	Molded
RST-002-02-00	Clam-Shell	2	3.2×1.6	0.635	Molded
RST-002-03-00	Clam-Shell	2	1×0.5	0.35	Molded

[Contact Us]

MiS Technologies Corporation

Sagamihara Sangyo Sozo Center #306
5-4-30 Nishihashimoto Midori-ku Sagamihara
Kanagawa 252-0131 Japan

TEL : 81-42-770-9425/FAX : 81-42-770-9426
<https://www.mis-tech.jp/enquiry>



Ordering Code

CXP-H02-07-00

① ② ③ ④ ⑤ ⑥

①	CXP Series
②	PKG Size A~L : 4918~1610Size
③	Number of contacts
④	Design number
⑤	Type - : Formed M : Machined
⑥	Additional Specification

Specifications

Machined

- Application : Prototype (Available from 1 piece)
- Operating Temperature : -45°C to +150°C
- Materials : PES
- Contact : Probe pin Contacts

Molded

- Application : Mass production (Tooling required)
- Operating Temperature : -45°C~+150°C
- Materials : PES
- Contact : Probe pin Contacts

Features

An evaluation socket for tuning fork crystals, mainly used for clock functions and sub-clocks. We offer the industry's largest Lineup of machined and molded clamshell sockets for applications from prototype to mass production. Please contact us for contact dimensions.

Series Lineup

socket number	socket type	pin count	PKG size	PKG thickness	Specifications
[3.2×1.5]					
CXP-H02-01-00	Clam-Shell	2	3.2×1.5	0.8	Molded
CXP-H02-03-00	Clam-Shell	2	3.2×1.5	0.9	Molded
CXP-H02-05-00	Clam-Shell	2	3.2×1.5	0.7	Molded
CXP-H02-07M00	Clam-Shell	2(4)	3.2×1.5	0.8	Machined
CXP-H04-01-00	Clam-Shell	4	3.2×1.5	0.95	Molded
CXP-H04-02-00	Clam-Shell	4	3.2×1.5	0.8	Molded
[2.0×1.2]					
CXP-K02-04-00	Clam-Shell	2	2.0×1.2	0.5	Molded
CXP-K02-08-00	Clam-Shell	2	2.0×1.2	0.37	Molded
CXP-K04-18-00	Clam-Shell	4	2.0×1.2	0.8	Molded
CXP-K04-20-00	Clam-Shell	4	2.0×1.2	0.55	Molded
CXP-K04-32-00	Clam-Shell	4	2.0×1.2	0.55	Molded
CXP-K02-09M00	Clam-Shell	2(4)	2.05×1.2	0.5	Machined
CXP-K02-10-00	Clam-Shell	2(4)	2.05×1.2	0.5	Molded
CXP-K04-16-00	Clam-Shell	4	2.05×1.2	0.4	Molded
CXP-K04-23M00	Clam-Shell	4	2.05×1.25	0.25	Molded
CXP-K02-12-00	Clam-Shell	2	2.5×1.2	0.48	Molded
[1.6×1.0]					
CXP-M02-02-00	Clam-Shell	2	1.6×1.0	0.4	Molded
CXP-M02-01-00	Clam-Shell	2	1.55×0.95	0.37	Molded
CXP-M02-03-00	Clam-Shell	2	1.7×1.1	0.45	Molded

[Contact Us]

MiS Technologies Corporation

Sagamihara Sangyo Sozo Center #306
5-4-30 Nishihashimoto Midori-ku Sagamihara
Kanagawa 252-0131 Japan
TEL : 81-42-770-9425/FAX : 81-42-770-9426
<https://www.mis-tech.jp/enquiry>